

SUPER TITANIA 3

2019

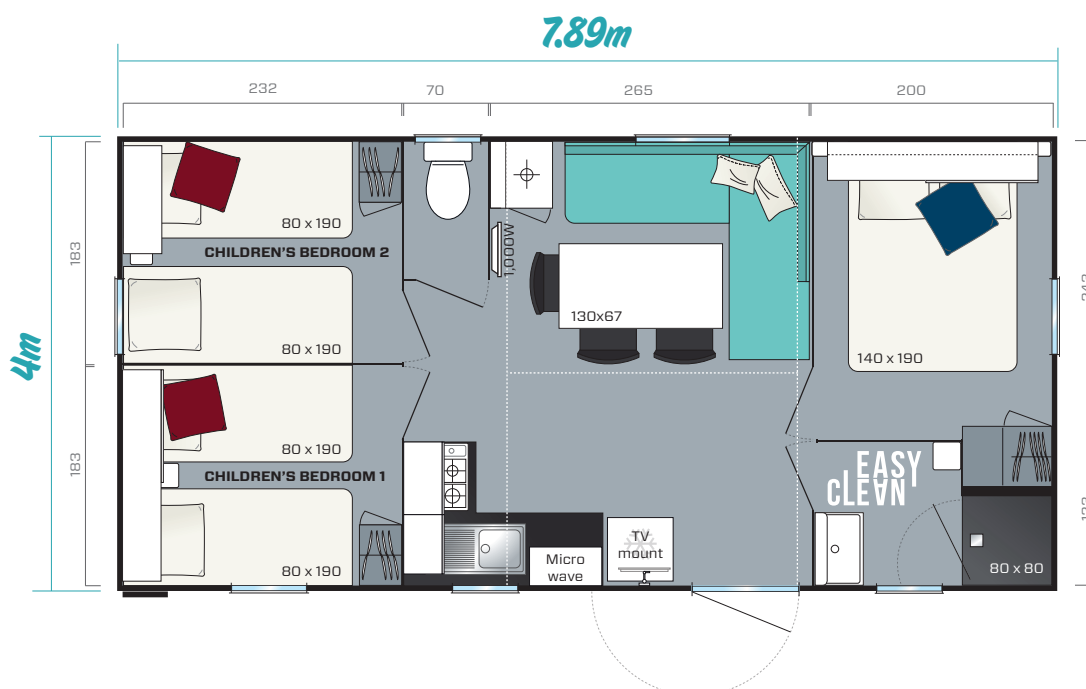
3 bedrooms
6 Sleeps
28.3m²
7.89m x 4m



The Super Titania 3 comes with Grizzli cladding on 4 sides and a single-pitch roof
Overall dimensions. Usable interior floor area. Height: 3.49m

Guaranteed profitability with this compact and practical three-bedroom model

- ✦ Large L-shaped day-bed-style sofa
- ✦ Fully equipped kitchen
- ✦ Standard TV mount capable of holding a big screen
- ✦ Ample storage and wardrobe space



Standard fittings

- Smoke detector guaranteed for 10 years
- 100% LED indoor lighting
- 1,000W convector
- 35 kg/m³ HR foam mattress with antibacterial and hypoallergenic cover
- High and low vents
- Phthalate-free linoleum
- Central circuit breaker
- Aerial socket and TV cabling
- Kitchen units on feet with PVC skirting boards
- Flow limiters on sink and washbasin mixer taps (7 l/min)
- Top-of-the-range, ACS-certified mixer taps
- Natural draught gas boiler with pilot light (14kW)
- Environmental awareness sticker



Kitchen

- Microwave cabinet
- Deep pan drawers
- White 4-burner gas hob
- 204L 2-door white Class A+ fridge-freezer
- Kitchen units on feet with skirting boards
- Roller blind

Lounge

- Dining table with fixed charcoal-grey lacquered- metal legs
- Large L-shaped sofa
- 3 stackable grey indoor/outdoor chairs

Children's/guest bedrooms

- Bed bridge unit with sliding door in one bedroom, open cabinet in the other bedroom
- Freestanding metallic bedside table
- Wardrobe at foot of bed
- 18-slat bed base with raised legs and 35 kg/m³ HR foam mattress
- Blackout curtain

Ideal options

- Moving partition between the 2 bedrooms.

Bathroom and WC

- Easy Clean, built-to-last bathroom.
- Silky-smooth extra-flat 80cm x 80cm shower tray
- Wall-mounted washbasin unit with built-in towel rail and shelf
- Corner shelf with modern design
- Frosted window for total privacy
- Dual-flush toilet (3/6 litres)

Master bedroom

- Headboard shelf and bed bridge unit with sliding door
- Adjustable reading lights with built-in switch
- 2 wall-mounted metallic bedside tables
- Large hotel-style wardrobe
- 18-slat bed base with raised legs and 35 kg/m³ HR foam mattress
- Blackout curtain

