

SUPER MERCURE

2019

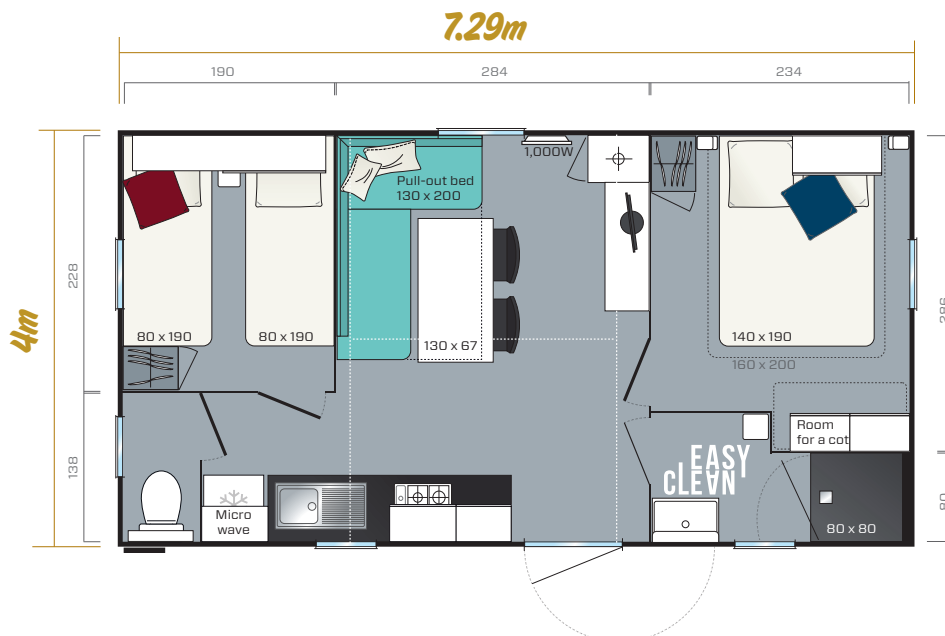
2 bedrooms
4 to 6 Sleeps
26.1m²
7.29m x 4m



The Super Mercure comes with natural wood cladding on 4 sides
Overall dimensions. Usable interior floor area. Height: 3.45m

The Super Mercure is the best-selling model in France and represents a safe buy-to-let investment. Every detail is designed to accommodate four to seven persons in absolute comfort.

- ✦ L-shaped sofa facing the TV unit
- ✦ Large TV unit with doors
- ✦ Practical and user-friendly kitchen
- ✦ Room for a cot in the master bedroom (compatible with the optional 160cm x 200cm bed)
- ✦ Microwave unit
- ✦ Multiple storage units in both bedrooms



Standard fittings

- Smoke detector guaranteed for 10 years
- 100% LED indoor lighting
- - 1,000W convector
- 35 kg/m³ HR foam mattress with antibacterial and hypoallergenic cover
- High and low vents
- Phthalate-free linoleum
- Central circuit breaker
- Aerial socket and TV cabling
- Kitchen units on feet with PVC skirting boards
- Flow limiters on sink and washbasin mixer taps (7 l/min)
- Top-of-the-range, ACS-certified mixer taps
- Natural draught gas boiler with pilot light (14kW)
- Environmental awareness sticker



Kitchen

- Microwave cabinet
- 3 pan drawers
- White 4-burner gas hob
- 115L Class A+ table-top fridge

Bathroom

- Easy Clean, built-to-last bathroom.
- Silky-smooth extra-flat 80cm x 80cm shower tray
- Wall-mounted washbasin unit with built-in towel rail and shelf
- Corner shelf with modern design
- Frosted window for total privacy
- Dual-flush toilet (3/6 litres)

Ideal options

- 500W convector in bedrooms and bathroom
- TV mount for all screen types

Living room

- Dining table with fixed charcoal-grey lacquered-metal legs
- Large L-shaped sofa with 130cm x 200cm pull-out bed
- 2 stackable grey indoor/outdoor chairs
- Large TV cabinet with doors and storage units

Master bedroom

- Semi-open headboard
- Adjustable reading lights with built-in switch
- 2 wall-mounted metallic bedside tables
- Headboard shelf
- 18-slat bed base with raised legs and 35 kg/m³ HR foam mattress
- Blackout curtain



Children's/guest bedroom

- Bed bridge unit with sliding door
- Wardrobe at foot of bed
- Freestanding metallic bedside table
- 18-slat bed base with raised legs and 35 kg/m³ HR foam mattress.
- Blackout curtain

- 160cm x 200cm bed in master bedroom with freedom of movement

- Combined blackout blind and mosquito screen
- Transverse high bed to free up space and increase sleeping capacity