

SIEMENS

Siemens PLM Software

LMS Imagine.Lab Sysdm

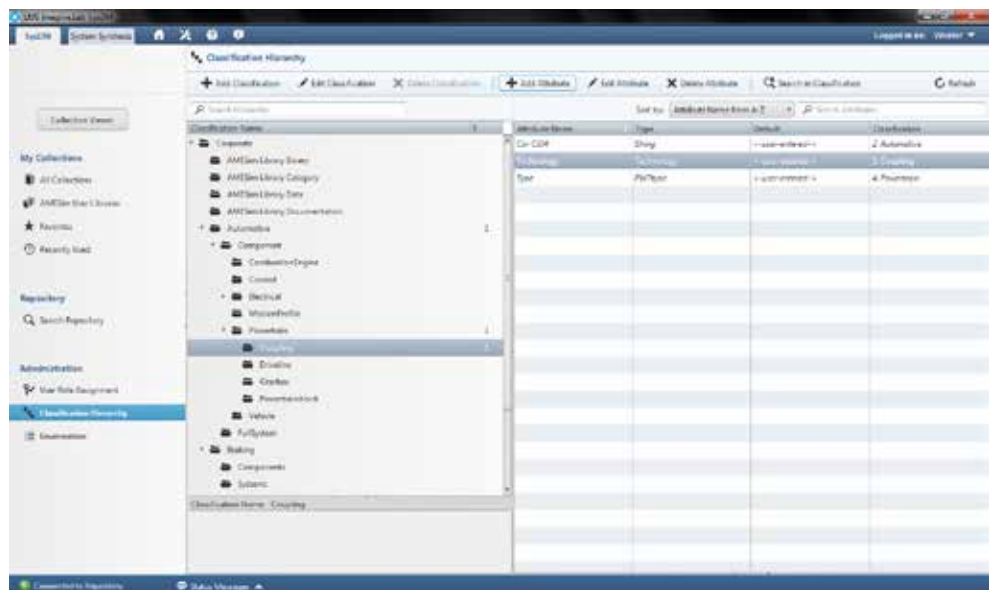
Providing a collaborative environment for model-based systems engineering

Benefits

- Streamlines collaboration between system and control engineers, departments and organizations
- Enables concurrent and distributed development through version and variant management
- Enables work product release management

LMS Imagine.Lab™ Sysdm software enables you to manage system simulation models and data originating from LMS Imagine.Lab Amesim™ software and other system simulation tools. This provides a collaborative environment for model-based systems engineering. LMS Sysdm is the

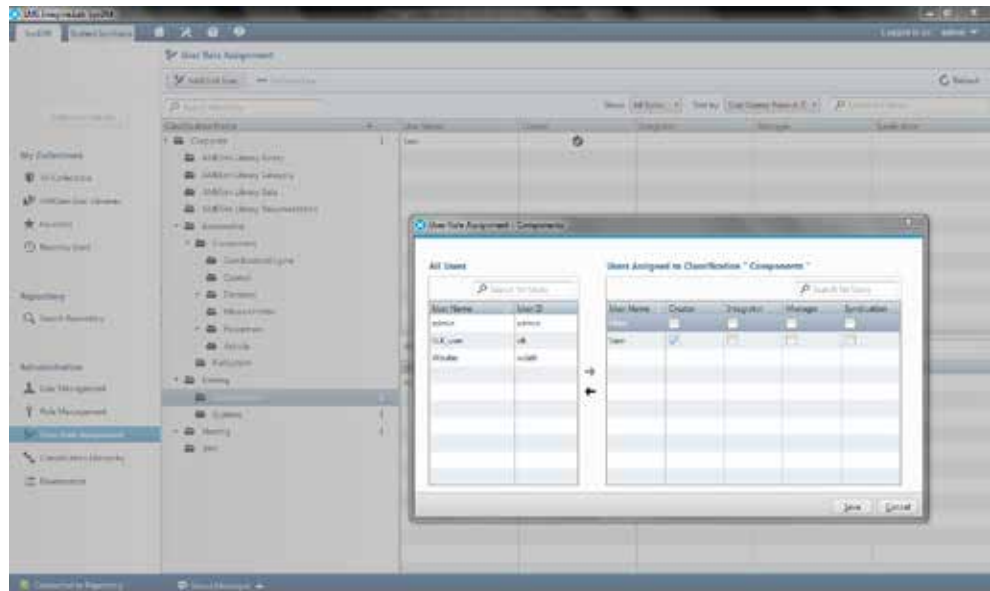
repository system in which you can create an organizational model for system simulation models and data in order to facilitate classification, query and retrieval according to relevant engineering workflows.



LMS Imagine.Lab Sysdm

Features

- Create elements and collections
- Create, edit and manipulate classification
- Control workflow through role-based access
- Publish new and validated versions of collections
- Integrate meta-information annotation through attributes
- Use simple and advanced search capabilities
- Organize model dependencies with branching and collection association
- Leverage graphical version management history
- Manage LMS Amesim and Simulink user libraries

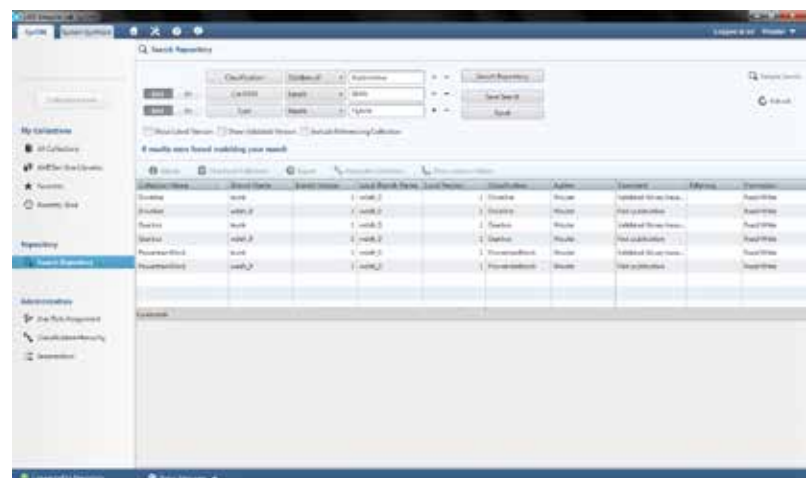


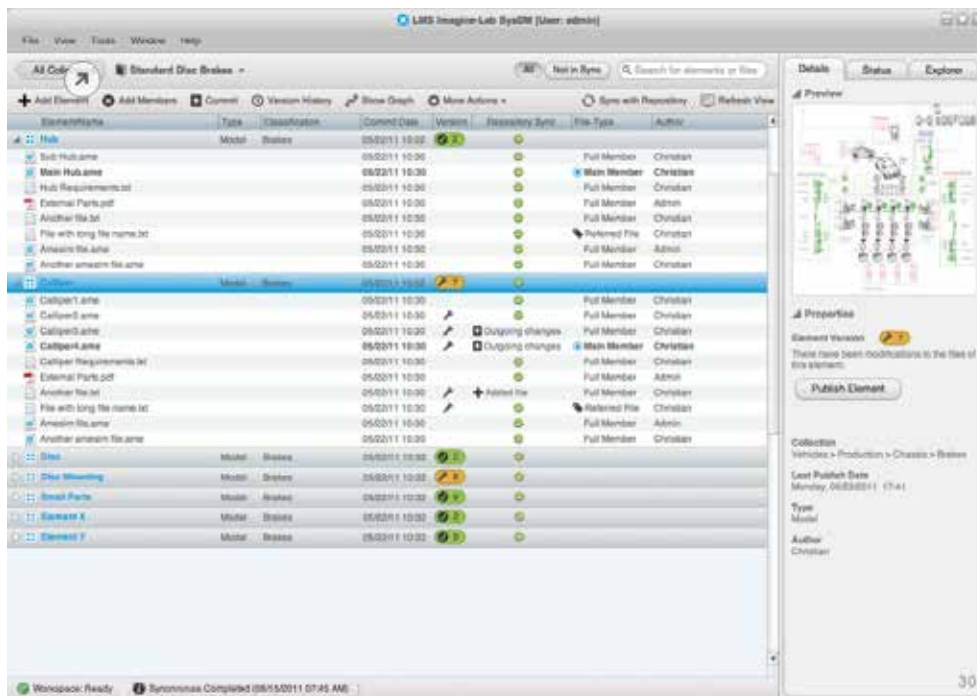
LMS Sysdm embeds version management capabilities that enable you to handle the model lifecycle throughout the product development cycle. LMS Sysdm allows variant management, enabling you to properly organize multiple representations of system components and subsystems for system model instantiation, depending on the stage of development and objective of the simulation. The software integrates role-based access control to support the implementation of various collaboration workflows.

Overall, LMS Sysdm is the cornerstone that enables knowledge capitalization for a development organization's application of model-based systems engineering.

User-defined organization models

LMS Sysdm enables you to organize system models in a user-defined structure that represents the logical hierarchy of system models and related data – such as parameter sets, scripts and experiments – making it easier to manage these models and data as virtual elements and collections for model-based engineering.





Collaborative model development

LMS Sysdm enables multi-user collaborative model development through role-based access control by defining user access rights for system models and data based on roles, functions and responsibilities. Using role-based view and access control for the models, collaboration workflows can be implemented using features such as model check-in and check-out, model version validation and syndication to model and data updates.

Model sharing among engineering communities

With LMS Sysdm, you will be able to share models among different communities that create and use them, such as the controls, plant and systems integration engineering teams. The version control for model lifecycle management and the variant management features allow engineers from these communities to maintain full traceability of the different versions of these shared models.

Efficient system development

To put your resources and knowledge to work for more effective, efficient system development, LMS Sysdm provides an open environment to manage models from LMS Amesim, Simulink and other system simulation tools. LMS Sysdm can be utilized in a single-user context, providing traceability and version control for individual system model management, or as a team-oriented model management solution for collaborative, model-based systems engineering.

Contact

Siemens PLM Software
 Americas +1 248 952 5664
 Europe +32 16 384 200
 Asia-Pacific +852 2230 3308

www.siemens.com/plm

© 2014 Siemens Product Lifecycle Management Software Inc. Siemens and the Siemens logo are registered trademarks of Siemens AG. LMS, LMS Imagine.Lab, LMS Imagine.Lab Amesim, LMS Virtual.Lab, LMS Samtech, LMS Samtech Caesam, LMS Samtech Samcef, LMS Test.Lab, LMS Soundbrush, LMS Smart, and LMS SCADAS are trademarks or registered trademarks of Siemens Industry Software NV or any of its affiliates. All other trademarks, registered trademarks or service marks belong to their respective holders.
 34779-Y3 8/14 P