

KEBRITE SOLUTIONS

Simple, Powerful, Affordable.

Kebrite is a software development company that delivers mission critical software for all industries with specific benefit for manufacturers. Kebrite employs industry experts whose exclusive focus is the design of the best software for the collection of job, labor, payroll, time and attendance and HR related data. Kebrite's software integrates with ERP systems including INFOR's Visual Manufacturing®.

Job Tracking, Time and Attendance, HR Management, Payroll Solution.



Integrates with Visual Manufacturing®.
Integrates all of your company divisions into one single solution.
Unlimited office and shop floor interfaces.
Barcode enabled solution.
Document control system (drag & drop).
Work with tablets and touch screens.
Automatic pro-ration of overlapping hours.
Attendance policy points system.
Employee reports from the shop floor.
Automates VISUAL® processes.

Personalized online support system.
Frequent product updates.
With 100% Accuracy & Accountability.
Roles based security.
Real-time solution.
Fast & efficient.
Eliminates unnecessary work.
Injury and illness tracking with OSHA (USA) reporting.
User Friendly Interfaces.
And much more!



MISSION CRITICAL FUNCTIONALITY

We have designed our software that can also work as a compliment to your VM® system; it is fully integrated and considerably better than any other option.

Keep accurate track of your workforce and its performance. Through the various reports available with Kebrite your management team can measure productivity, gauge resource availability and control the daily production output.

The various features and configurable settings designed into Kebrite's workforce management solution make it possible for you to implement and enforce a time and attendance policy system that can have a direct positive effect on your company's bottom line.

Through the various features available in Kebrite you can easily deal with complex union rules, and collect/disseminate information for government audits or employee related litigation and much more.

Employee Name	Employee ID	Date	Resource	Quantity	Mileage	Hourly Rate	Start	Stop	Total	Unpaid	Total	Unpaid	Total	Unpaid
Wren, Mike	00018	Wed, Feb 18, 2010	INDIRECT	1.0000	8.00	100.00	100.00	0.00	0.00	0.00	0.00	0.00	0.00	0.00
Wren, Mike	00018	Wed, Feb 18, 2010	INDIRECT	1.0000	8.00	100.00	100.00	0.00	0.00	0.00	0.00	0.00	0.00	0.00
Wren, Mike	00018	Wed, Feb 18, 2010	INDIRECT	1.0000	8.00	100.00	100.00	0.00	0.00	0.00	0.00	0.00	0.00	0.00



CUSTOMIZATION

Kebrite can be customized to accommodate your policies and processes rather than the other way around. Kebrite Solutions Inc. is a software development company that offers “out of the box” workforce management solutions where they make sense; as a progressive software development company Kebrite Solutions Inc. has experience with the distinct requirements that unique manufacturers have so it makes use of the latest technology, and practices to develop and deploy enhancements or customized solutions when they are needed.

ACCURACY

Through the use of barcodes, scanners, or touch screens Kebrite automates the collection of Job Information as well as Time and Attendance. Kebrite Solutions software eliminates manual data entry and integrates into ERP and payroll systems to ensure 100% accuracy.

EFFICIENCY

Our software will provide you with the most efficient way of tracking shop floor labor, productive/unproductive labor, attendance and payroll through one single interface; in addition to making the user experience simpler, this means NO licensing costs, as well as lower maintenance and support costs.

HUMAN RESOURCES

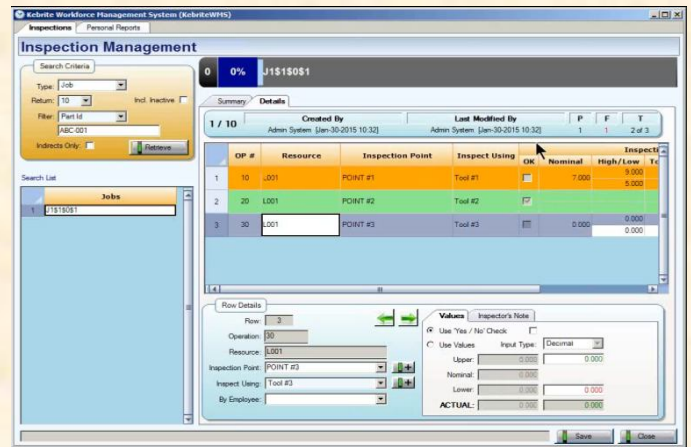
In addition to letting you keep accurate track of your highest overhead expense and its performance, our software gives you the assistance of an HR department. A further benefit to having our software as part of your systems is that since it allows you to know exactly how your labor force performs, it helps during performance reviews, planning work, allocating resources, etc. We will provide your management team with accuracy in reporting, live information and accountability from staff.

We have a full attendance policy point system, an injury, illness tracking system, skills and training module and document control system to help with your HR needs.



ADDRESSED ISSUES

Our software will address issues like time proration, auto issue, back flushing, labor tracing and all the calculations involved. The user friendly interface and customizable functionality mean that even though your ERP may provide some functionality Kebrite's advanced, specialized functionality combined with its ease of use save your supervisors time and effort.



MULTIPLE OVERLAPPING JOBS AND PRO-RATION

When dealing with multiple jobs and labor tickets Kebrite automatically calculates the changes that need to be applied to every labor ticket that needs to be changed. Our software will automatically factor in unpaid breaks and recalculate the labor tickets that overlap each other. From just one time value change Kebrite will have automatically detected changes required over multiple other labor records and exported everything to your ERP effortlessly.

UPDATES AND UPGRADES

We progressively add features to our software and release them for free to our annual support customers; this guarantees that your investment in our software provides both long term and short term returns.

ACCOUNTABILITY

Every field on every interface in Kebrite is audited ensuring 100% accountability for any change made. This includes all labor records sent to your ERP!

Contact: Kebrite Solutions Inc.

**Address: 170-422 Richards Street
Vancouver, BC V6B 2Z4**

Phone: 604-210-2950 Opt. 2

Email: info@kebrite.com