

LOGGIA 2

2019

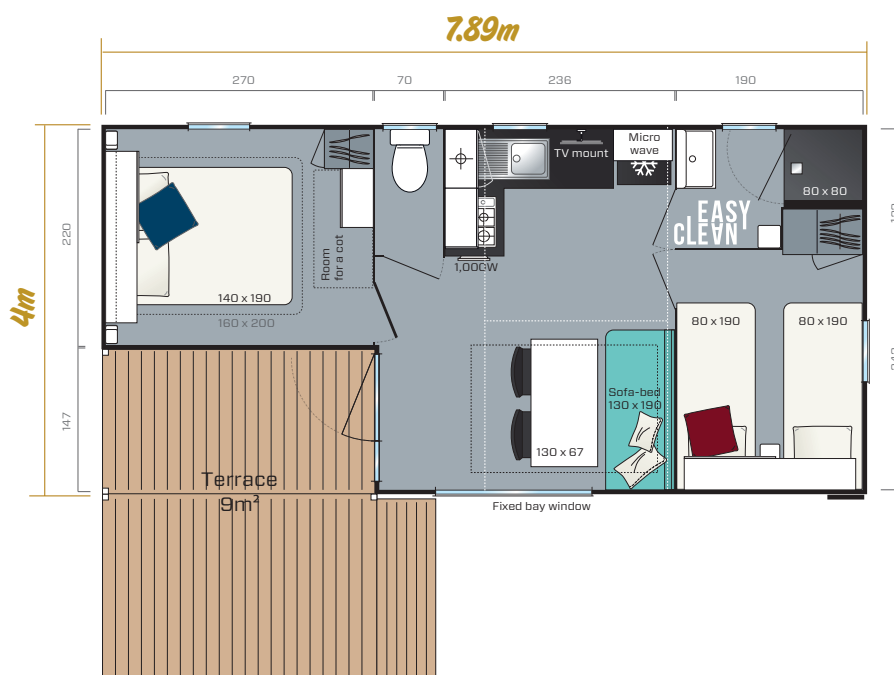
2 bedrooms
4 to 6 Sleeps
24.2m² + 9m² terrace
7.89m x 4m



The Loggia 2 comes with Grizzli cladding on 4 sides
Overall dimensions. Usable interior floor area. Height: 3.49m

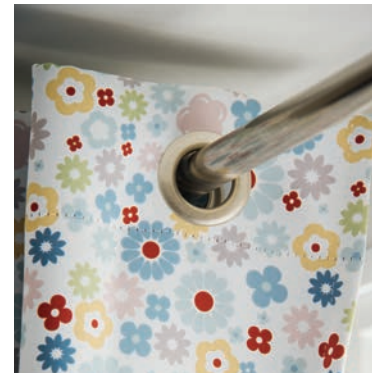
An IRM best-seller with a 9m² attached terrace, the Loggia 2 is the ideal 2-in-1 model.

- ✦ Partly covered reversible terrace with extension and step
- ✦ Large master bedroom with ample storage and room for a 160cm x 200cm bed and cot
- ✦ Large bay window in lounge for maximum brightness



Standard fittings

- Smoke detector guaranteed for 10 years
- 100% LED indoor lighting
- 1,000W convector
- 35 kg/m³ HR foam mattress with antibacterial and hypoallergenic cover
- High and low vents
- Phthalate-free linoleum
- Central circuit breaker
- Aerial socket and TV cabling
- Kitchen units on feet with PVC skirting boards
- Flow limiters on sink and washbasin mixer taps (7 l/min)
- Top-of-the-range, ACS-certified mixer taps
- Natural draught gas boiler with pilot light (14kW)
- Environmental awareness sticker



Kitchen

- Microwave cabinet
- Deep pan drawers
- White 4-burner gas hob
- 115L Class A+ table-top fridge
- Roller blind
- TV mount

Master bedroom

- Headboard shelf and bed bridge unit with sliding door
- Adjustable reading lights with built-in switch
- 2 wall-mounted metallic bedside tables
- Wardrobe and storage unit at foot of bed
- 18-slat bed base with raised legs and 35 kg/m³ HR foam mattress
- Blackout curtain
- Room for a cot

Living room

- Dining table with fixed charcoal-grey lacquered-metal legs
- Seating along long wall with 130cm x 190cm fold-out bed
- 2 stackable grey indoor/outdoor chairs

Bathroom

- Easy Clean, built-to-last bathroom.
- Silky-smooth extra-flat 80cm x 80cm shower tray
- Wall-mounted washbasin unit with built-in towel rail and shelf
- Corner shelf with modern design
- Frosted window for total privacy
- Dual-flush toilet (3/6 litres)



Children's/guest bedroom

- Bed bridge unit with sliding door
- Freestanding metallic bedside table
- Hotel-style wardrobe at foot of bed
- 18-slat bed base with raised legs and 35 kg/m³ HR foam mattress
- Blackout curtain

Ideal options

- Privacy screens for the terrace extension for a more intimate setting and protection from the wind and rain
- Terrace roof
- 160cm x 200cm bed in the master bedroom
- Blackout blind and mosquito screen
- Transverse high bed to free up space and increase sleeping capacity

Non-contractual document: descriptions, illustrations and photos are for guidance only.

