

# VISION

RAISE STANDARDS – INCREASE UNDERSTANDING

No PC required!



*Simple to use:*

No Installation, No PC, No Network!

### COLLECT

Freedom from the lab bench, personal data collection.



HAND HELD

### SHARE

Review data with the class. Create and encourage discussion.



PROJECTOR

### EXPLORE

Analyse the data. Explore the science. Challenge the student.



PC

### REPORT

Save and present your data to the class & teacher.



PRINT

# Interfaces



Ideal for laptops  
and netbooks

## EASYSense 3LINK

Order No. 5540

Three SmartQ sensor inputs, two timing ports powered from a PC, no power supply required.



## EASYSense 1LINK

Order No. 5530

Great for single sensor experiments.  
e.g. pH meter, heart rate, ECG.

## SmartQ Sensors

Beneath SmartQ's simple and bright exterior is a revolutionary architecture that dramatically enhances the intelligence, accuracy and value of the entire range of sensors.



- Accelerometer
- Anemometer
- Balance Adaptor
- Breathing Rate Belt pack
- Carbon Dioxide Gas
- Charge
- Colorimeter
- Conductivity pack
- Count/Tachometer
- Crocodile Clip Leads
- Current
- Drop & Bubble Counter
- ECG
- Force

- Gas Pressure
- Geiger Muller
- Heart Rate and Pulse
- Heat Flow
- Humidity
- Infrared
- Light Gate
- Light Level
- Magnetic Field
- Motion
- Oxygen pack
- pH pack
- Polar Heart Rate
- Push Button Switch

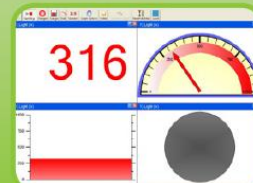
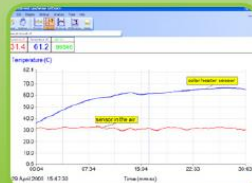
- Rain Gauge
- RF Electromog
- Rotary Motion
- Sound
- Speed of Sound pack
- Spirometer
- Stethoscope
- Tachometer/Count
- Temperature
- Timing Mats
- Ultra-violet
- Voltage

**SmartQ**  
TECHNOLOGY

### EASYSense SOFTWARE

Download the fully featured  
FREE EasySense software from:

[data-harvest.co.uk/easysense](http://data-harvest.co.uk/easysense)



For info : +62 21 5366 3245 / [ep-asia.co.id/data-harvest](http://ep-asia.co.id/data-harvest)